

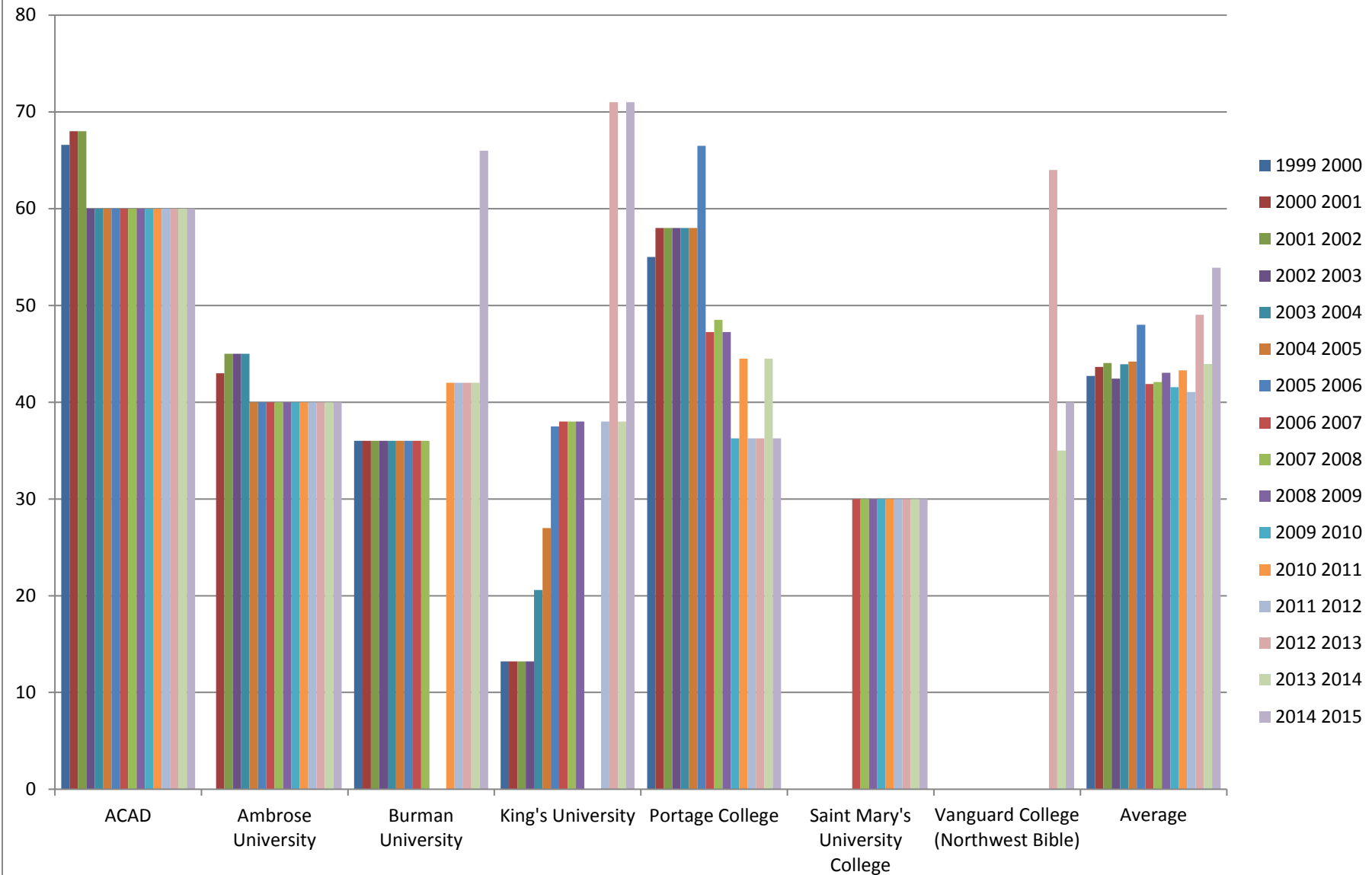
A.6. Full Reference Hours Per Week September Through April																									
Year/Institution	ACAD	Ambrose University	BCIT	Bow Valley College	Burman University	Concordia University College	Grand Prairie Regional College	Keyano College	King's University	Lakeland College	MacEwan University	Medicine Hat College	Mount Royal University	NAIT	Norquest College	Northern Lakes College	Olds College	Portage College	Red Deer College	Saint Mary's University College	SAIT Polytechnic	University of Alberta	University of Lethbridge	Vanguard College (Northwest Bible)	Average
1999 2000	66.6	N/A	64.0	N/A	36.0	N/A	56.0	37.5	13.2	N/A	79.0	67.0	72.0	72.5	23.0	27.5	N/A	55.0	64.0	N/A	69.3	N/A	N/A	N/A	53.5
2000 2001	68.0	43.0	64.0	N/A	36.0	N/A	66.0	37.5	13.2	62.8	76.5	67.0	72.0	72.5	57.0	36.3	N/A	58.0	64.0	N/A	69.3	N/A	N/A	N/A	56.6
2001 2002	68.0	45.0	64.0	N/A	36.0	N/A	66.0	37.5	13.2	62.8	79.0	69.0	72.0	72.5	61.0	37.5	N/A	58.0	64.0	N/A	69.3	N/A	N/A	N/A	57.3
2002 2003	60.0	45.0	N/A	N/A	36.0	N/A	66.0	37.5	13.2	62.8	79.0	78.0	70.0	72.5	61.0	37.5	N/A	58.0	66.5	N/A	69.3	N/A	N/A	N/A	57.0
2003 2004	60.0	45.0	64.0	N/A	36.0	N/A	66.0	37.5	20.6	62.8	79.0	77.0	62.0	72.5	61.0	37.5	N/A	58.0	67.5	N/A	75.3	N/A	N/A	N/A	57.7
2004 2005	60.0	40.0	64.0	N/A	36.0	N/A	66.0	N/A	27.0	68.0	79.0	81.0	68.0	72.5	61.0	37.5	N/A	58.0	70.0	N/A	75.3	N/A	N/A	N/A	60.2
2005 2006	60.0	40.0	64.0	N/A	36.0	N/A	66.0	N/A	37.5	68.0	79.0	81.0	68.0	72.5	61.0	37.5	N/A	66.5	70.0	N/A	85.0	N/A	N/A	N/A	62.0
2006 2007	60.0	40.0	62.0	N/A	36.0	56.0	70.5	N/A	38.0	70.0	77.0	80.0	68.0	73.0	61.0	38.0	N/A	47.3	74.0	30.0	85.0	N/A	N/A	N/A	59.2
2007 2008	60.0	40.0	62.0	N/A	36.0	55.0	69.0	N/A	38.0	70.0	77.0	80.0	70.3	73.0	63.5	47.0	N/A	48.5	85.0	30.0	85.0	N/A	N/A	N/A	60.5
2008 2009	60.0	40.0	62.0	N/A	N/A	N/A	69.0	N/A	38.0	70.0	77.0	83.5	70.3	73.0	63.5	N/A	N/A	47.3	85.0	30.0	85.0	N/A	N/A	N/A	63.6
2009 2010	60.0	40.0	62.0	N/A	N/A	53.0	69.0	N/A	N/A	70.0	77.0	83.5	70.3	72.3	63.5	36.0	N/A	36.3	85.0	30.0	85.0	N/A	N/A	N/A	62.1
2010 2011	60.0	40.0	54.5	N/A	42.0	53.0	69.0	37.5	N/A	74.3	77.0	83.5	N/A	72.3	55.5	N/A	N/A	44.5	85.0	30.0	85.0	N/A	N/A	N/A	60.2
2011 2012	60.0	40.0	61.5	N/A	42.0	53.0	69.0	35.0	38.0	72.8	76.0	83.5	N/A	72.3	55.5	36.0	N/A	36.3	85.0	30.0	85.0	N/A	N/A	N/A	57.3
2012 2013	60.0	40.0	61.5	60.0	42.0	53.0	78.0	35.0	71.0	72.8	76.0	83.5	65.3	72.3	55.5	36.0	N/A	36.3	85.0	30.0	85.0	N/A	N/A	64.0	60.1
2013 2014	60.0	40.0	61.5	63.0	42.0	39.5	58.5	58.0	38.0	72.8	74.0	81.5	65.3	72.3	59.5	36.0	79.5	44.5	77.0	30.0	89.0	N/A	60.0	35.0	58.3
2014 2015	60.0	40.0	50.5	63.0	66.0	39.5	54.0	58.0	71.0	78.8	74.0	81.5	N/A	72.5	59.5	N/A	47.5	36.3	78.3	30.0	89.0	79.0	60.0	40.0	61.6



**A.6. Full Reference Hours Per Week September Through April - FLE Below 1001**

Year/Institution	ACAD	Ambrose University	Burman University	King's University	Portage College	Saint Mary's University College	Vanguard College (Northwest Bible)	Average
1999 2000	66.6	N/A	36.0	13.2	55.0	N/A	N/A	42.7
2000 2001	68.0	43.0	36.0	13.2	58.0	N/A	N/A	43.6
2001 2002	68.0	45.0	36.0	13.2	58.0	N/A	N/A	44.0
2002 2003	60.0	45.0	36.0	13.2	58.0	N/A	N/A	42.4
2003 2004	60.0	45.0	36.0	20.6	58.0	N/A	N/A	43.9
2004 2005	60.0	40.0	36.0	27.0	58.0	N/A	N/A	44.2
2005 2006	60.0	40.0	36.0	37.5	66.5	N/A	N/A	48.0
2006 2007	60.0	40.0	36.0	38.0	47.3	30.0	N/A	41.9
2007 2008	60.0	40.0	36.0	38.0	48.5	30.0	N/A	42.1
2008 2009	60.0	40.0	N/A	38.0	47.3	30.0	N/A	43.1
2009 2010	60.0	40.0	N/A	N/A	36.3	30.0	N/A	41.6
2010 2011	60.0	40.0	42.0	N/A	44.5	30.0	N/A	43.3
2011 2012	60.0	40.0	42.0	38.0	36.3	30.0	N/A	41.0
2012 2013	60.0	40.0	42.0	71.0	36.3	30.0	64.0	49.0
2013 2014	60.0	40.0	42.0	38.0	44.5	30.0	35.0	43.9
2014 2015	60.0	40.0	66.0	71.0	36.3	30.0	40.0	53.9

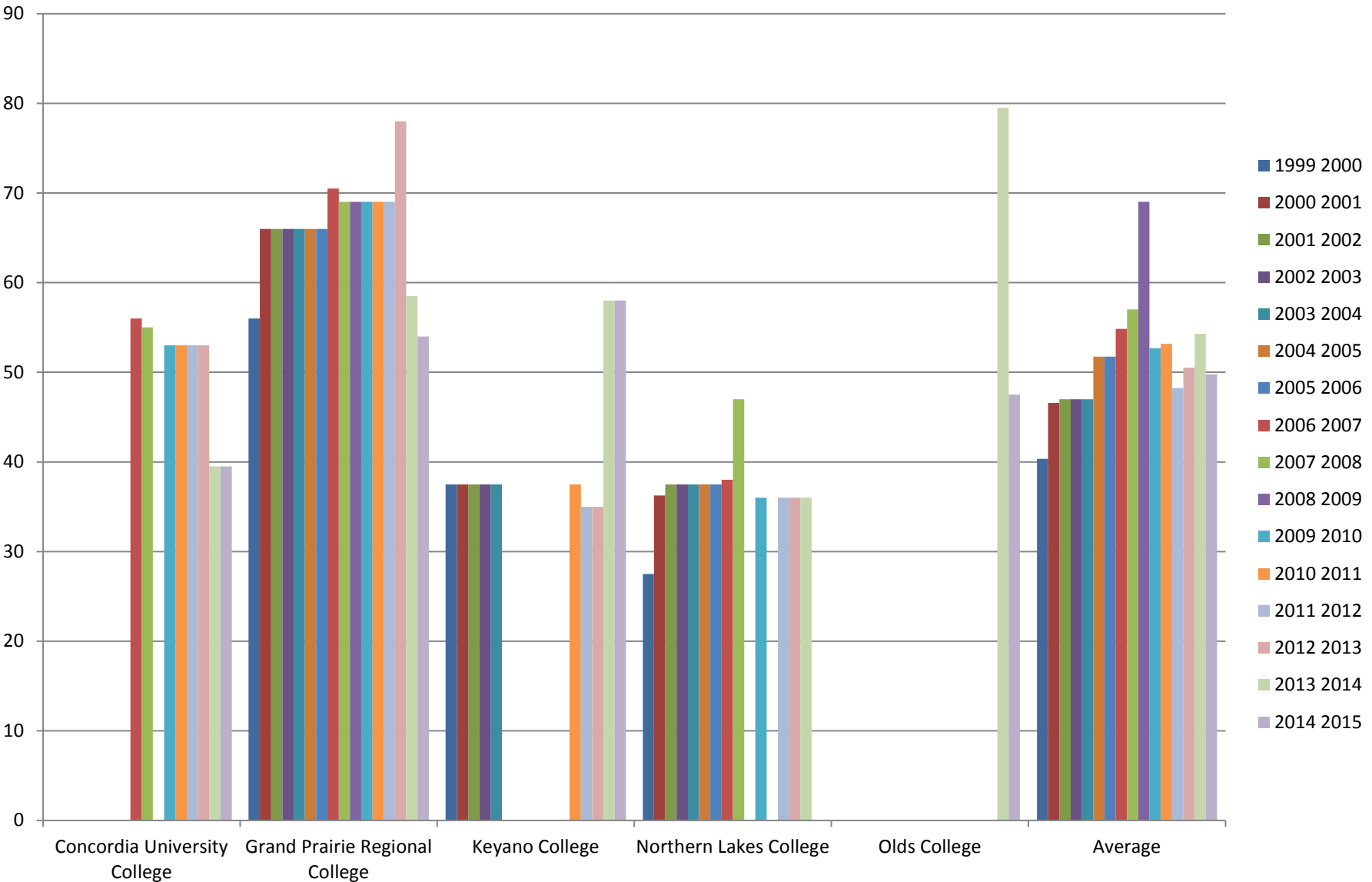
# Reference Hours Per Week (FLE Below 1001)



**A.6. Full Reference Hours Per Week September Through April - FLE 1001 to 2000**

<b>Year/Institution</b>	<b>Concordia University College</b>	<b>Grand Prairie Regional College</b>	<b>Keyano College</b>	<b>Northern Lakes College</b>	<b>Olds College</b>	<b>Average</b>
1999 2000	N/A	56	38	28	N/A	40
2000 2001	N/A	66	38	36	N/A	47
2001 2002	N/A	66	38	38	N/A	47
2002 2003	N/A	66	38	38	N/A	47
2003 2004	N/A	66	38	38	N/A	47
2004 2005	N/A	66	N/A	38	N/A	52
2005 2006	N/A	66	N/A	38	N/A	52
2006 2007	56	71	N/A	38	N/A	55
2007 2008	55	69	N/A	47	N/A	57
2008 2009	N/A	69	N/A	N/A	N/A	69
2009 2010	53	69	N/A	36	N/A	53
2010 2011	53	69	38	N/A	N/A	53
2011 2012	53	69	35	36	N/A	48
2012 2013	53	78	35	36	N/A	51
2013 2014	40	59	58	36	80	54
2014 2015	39.5	54.0	58.0	N/A	47.5	49.8

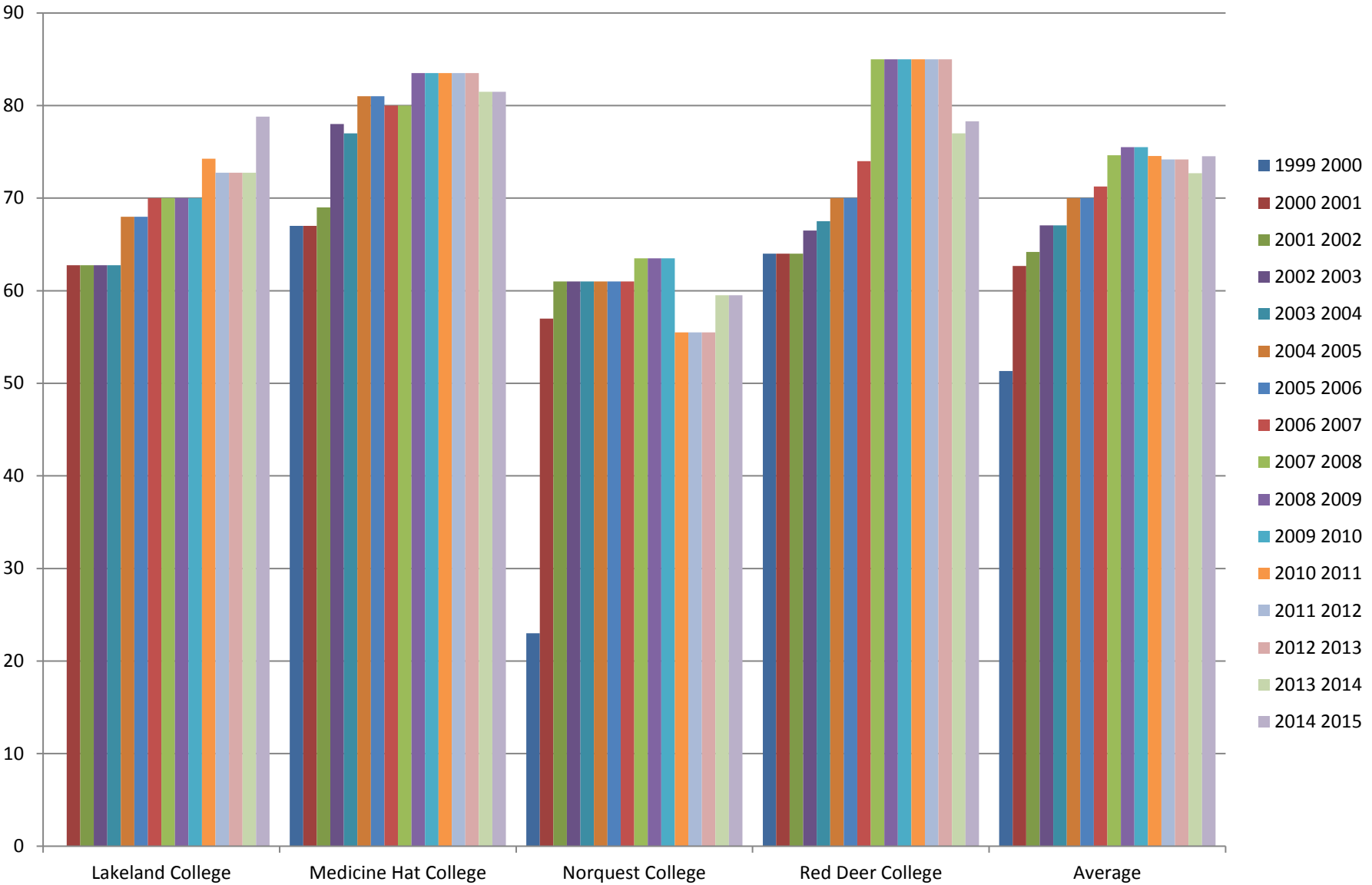
# Reference Hours Per Week (FLE 1001 to 2000)



**A.6. Full Reference Hours Per Week September Through April - FLE 2001 to 5000**

<b>Year/Institution</b>	<b>Lakeland College</b>	<b>Medicine Hat College</b>	<b>Norquest College</b>	<b>Red Deer College</b>	<b>Average</b>
1999 2000	N/A	67.0	23.0	64.0	51.3
2000 2001	62.8	67.0	57.0	64.0	62.7
2001 2002	62.8	69.0	61.0	64.0	64.2
2002 2003	62.8	78.0	61.0	66.5	67.1
2003 2004	62.8	77.0	61.0	67.5	67.1
2004 2005	68.0	81.0	61.0	70.0	70.0
2005 2006	68.0	81.0	61.0	70.0	70.0
2006 2007	70.0	80.0	61.0	74.0	71.3
2007 2008	70.0	80.0	63.5	85.0	74.6
2008 2009	70.0	83.5	63.5	85.0	75.5
2009 2010	70.0	83.5	63.5	85.0	75.5
2010 2011	74.3	83.5	55.5	85.0	74.6
2011 2012	72.8	83.5	55.5	85.0	74.2
2012 2013	72.8	83.5	55.5	85.0	74.2
2013 2014	72.8	81.5	59.5	77.0	72.7
2014 2015	78.8	81.5	59.5	78.3	74.5

# Reference Hours Per Week (FLE 2001 to 5000)





**A.6. Full Reference Hours Per Week September Through April - FLE Above 5000**

Year/Institution	BCIT	Bow Valley College	MacEwan University	Mount Royal University	NAIT	SAIT Polytechnic	University of Alberta	University of Lethbridge	Average
1999 2000	64.0	N/A	79.0	72.0	72.5	69.3	N/A	N/A	71.4
2000 2001	64.0	N/A	76.5	72.0	72.5	69.3	N/A	N/A	70.9
2001 2002	64.0	N/A	79.0	72.0	72.5	69.3	N/A	N/A	71.4
2002 2003	N/A	N/A	79.0	70.0	72.5	69.3	N/A	N/A	72.7
2003 2004	64.0	N/A	79.0	62.0	72.5	75.3	N/A	N/A	70.6
2004 2005	64.0	N/A	79.0	68.0	72.5	75.3	N/A	N/A	71.8
2005 2006	64.0	N/A	79.0	68.0	72.5	85.0	N/A	N/A	73.7
2006 2007	62.0	N/A	77.0	68.0	73.0	85.0	N/A	N/A	73.0
2007 2008	62.0	N/A	77.0	70.3	73.0	85.0	N/A	N/A	73.5
2008 2009	62.0	N/A	77.0	70.3	73.0	85.0	N/A	N/A	73.5
2009 2010	62.0	N/A	77.0	70.3	72.3	85.0	N/A	N/A	73.3
2010 2011	54.5	N/A	77.0	N/A	72.3	85.0	N/A	N/A	72.2
2011 2012	61.5	N/A	76.0	N/A	72.3	85.0	N/A	N/A	73.7
2012 2013	61.5	60.0	76.0	65.3	72.3	85.0	N/A	N/A	70.0
2013 2014	61.5	63.0	74.0	65.3	72.3	89.0	N/A	60.0	69.3
2014 2015	50.5	63.0	74.0	N/A	72.5	89.0	79.0	60.0	69.7

# Reference Hours Per Week (FLE Above 5000)

